

Auto Connectors

Model AQCB Auto Connector

RoHS2



Model

50AQCB-□□□□ RS2

Administered No.
(O-ring material, Key groove type)

Connection size : 50A

Features

- Corrosive-resistant PTFE is adopted on wetted parts and these connectors have outstanding chemical resistance and durability.
- Since the cleaning and drying method of the auto connector adopts the Eddy cyclone method, only the coupling part is cleaned and dried.
- Connection-error prevention type with key grooves are available.
- The rear part of product part has unique mechanism structure, no moving action during operation.
- There is all-stainless-steel made for organic chemicals.

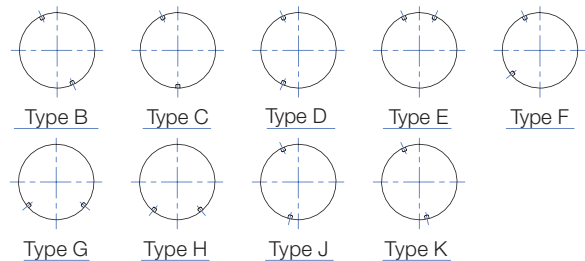


S40AQCB

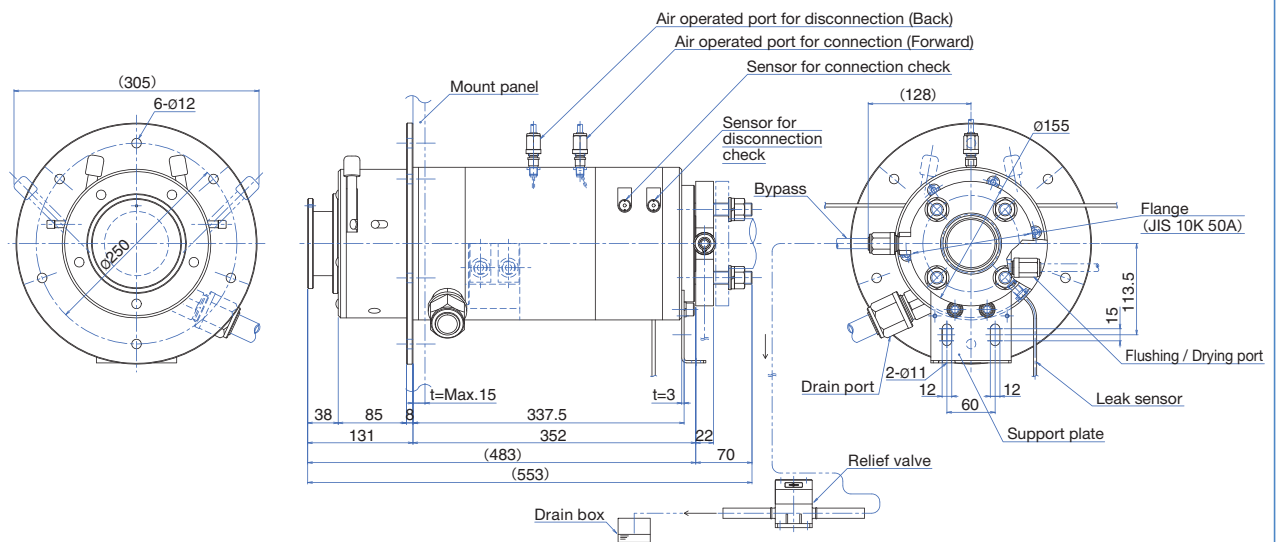
Specifications

| | |
|---------------------------------|--------------------------------------|
| Operating pressure | 250kPa |
| Fluids | Chemicals |
| Temperature range | 5~50°C |
| Wetted parts | PCTFE, PTFE, Various types of O-ring |
| DI water cleaning pressure | 40~200kPa |
| DI water cleaning flow rate | 5L/min |
| Brow-drying pressure | Max.200kPa |
| Cylinder operating pressure | 450~480kPa |
| Tube size of relief valve | 1/2" (Ø12.7×Ø9.53) |
| Relief pressure of relief valve | 450kPa |

Connection-error Prevention Mechanism using Key groove



Dimensions



Model AQC-F Plug for Auto Connector

RoHS2



AQC-WP-50AP-F

Features

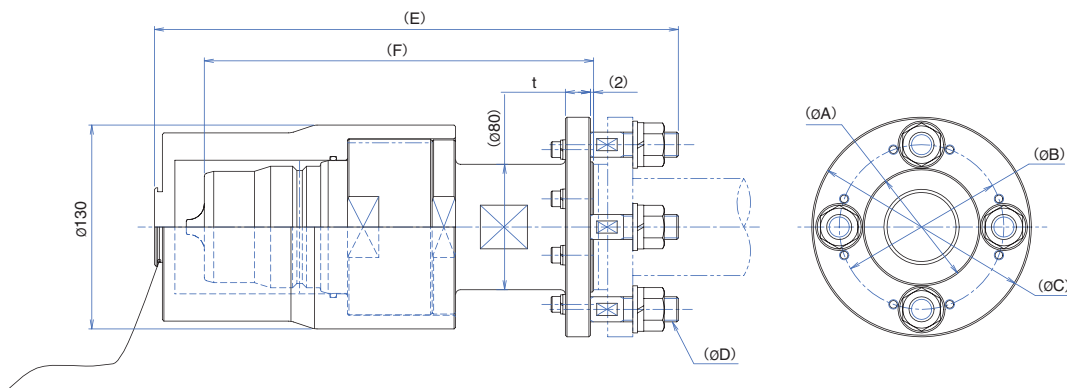
- Corrosive-resistant PTFE is adopted on wetted parts and these connectors have outstanding chemical resistance and durability.
- Plug for Auto connector (flange type).
- Hose and connector can be managed separately. It is excellent for the maintenance.
- Connection-error prevention type with key grooves are available.

Specifications

| | |
|--------------------|--------------------------------------|
| Operating pressure | 250kPa |
| Temperature range | 5~50℃ |
| Wetted parts | PCTFE, Various types of O-ring, PTFE |
| Accessories | AQC-50A-PP-P (Dust Proof Cap) |

Models / Dimensions

| Type | (øA) | (øB) | (øC) | (øD) | (E) | (F) | t | O-ring | Flange |
|--------------------------|------|-------|------|-----------|-----|-----|------|----------|----------------|
| AQC-WP-50AP-F-CASE □ | ø84 | ø120 | ø155 | M16 P2.0 | 337 | 260 | 16 | Perfluor | JIS 10K 50A |
| AQC-WK-50AP-F-CASE □ | ø84 | ø120 | ø155 | M16 P2.0 | 337 | 260 | 16 | Kalrez® | JIS 10K 50A |
| AQC-WP-50AP-40AF-CASE □ | ø75 | ø105 | ø140 | M16 P2.0 | 314 | 260 | 16 | Perfluor | JIS 10K 40A |
| AQC-WK-50AP-40AF-CASE □ | ø75 | ø105 | ø140 | M16 P2.0 | 314 | 260 | 16 | Kalrez® | JIS 10K 40A |
| AQC-WP-50AP-A40AF-CASE □ | ø71 | ø98.5 | ø127 | M12 P1.75 | 334 | 250 | 17.5 | Perfluor | ANSI 150Lb 40A |
| AQC-WK-50AP-A40AF-CASE □ | ø71 | ø98.5 | ø127 | M12 P1.75 | 334 | 250 | 17.5 | Kalrez® | ANSI 150Lb 40A |



Dust Proof Cap



Models

AQC-50A-PP-P (Material : PP / O-ring : FKM)

AQC-50A-PP-P-Pr (Material : PP / O-ring : Perfluor)

Auto Connectors

Model SS50AQCB Auto Connector

RoHS2

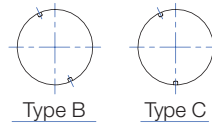


Model

SS50AQCB- K33TRS2S

▶ Key groove type

Connection-error Prevention Mechanism using Key groove



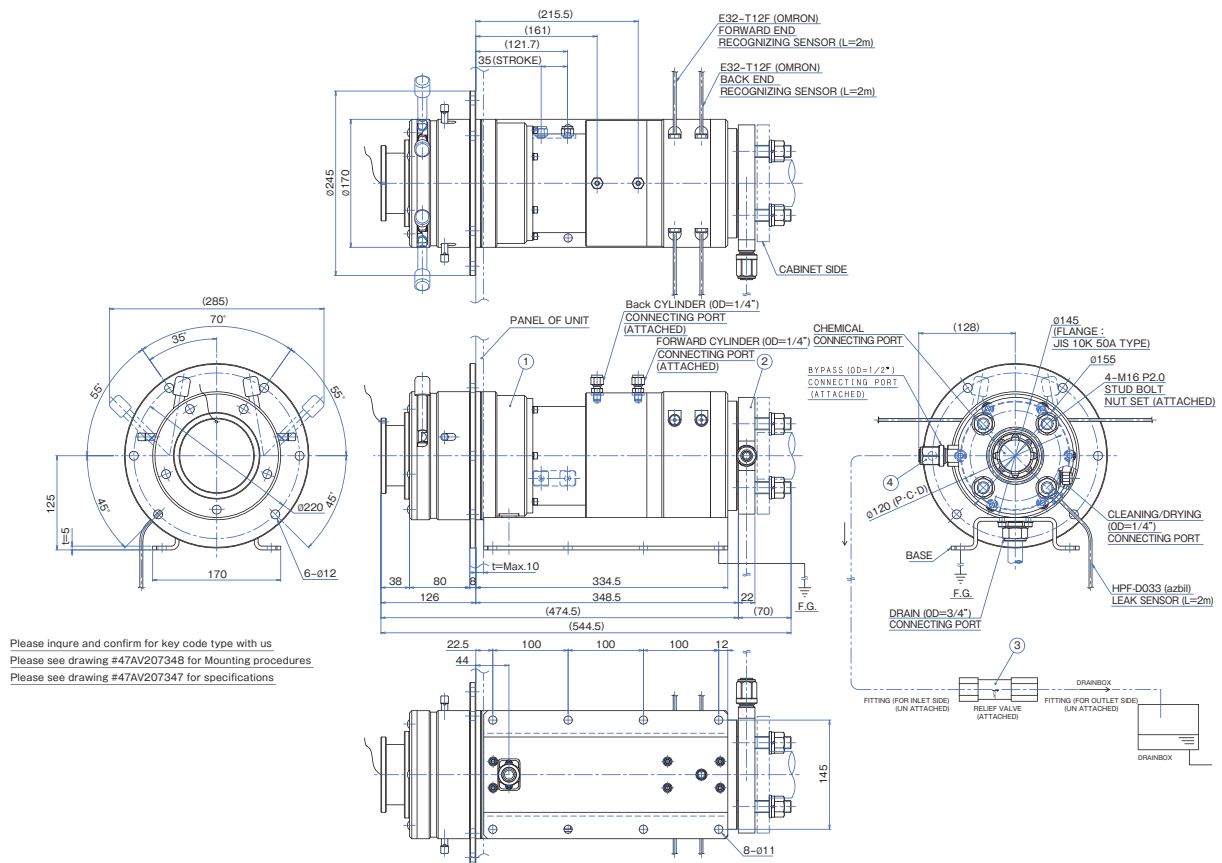
Features

- This is all-stainless-steel made for organic chemicals.
- Since the cleaning and drying method of the auto connector adopts the Eddy cyclone method, only the coupling part is cleaned and dried.
- Connection-error prevention type with key grooves are available.
- The rear part of product part has unique mechanism structure, no moving action during operation.
- This product can be used chemicals for plug cleaning.

Specifications

| | |
|---------------------------------|---|
| Operating pressure | 250kPa |
| Fluids | Chemicals |
| Temperature range | 5~50°C |
| Wetted parts | PTFE, PCTFE, SUS316, SUS316L KALREZ O-RING, FEP JACKET O-RING |
| DI water cleaning pressure | 40~200kPa |
| DI water cleaning flow rate | 5L/min |
| Brow-drying pressure | Max.200kPa |
| Cylinder operating pressure | 450~480kPa |
| Tube size of relief valve | 1/2" (Ø12.7×Ø9.53) |
| Relief pressure of relief valve | 450kPa |

Dimensions



Model SAQC-F Plug for Auto Connector RoHS2

Quick Connectors

Pressure Sensors

Flowmeters

Flow Controllers

Regulators

Valves

Fittings



SAQC-WK-50AP-40AF

Model

SAQC-WK-50AP-40AF-



▶ Key groove type

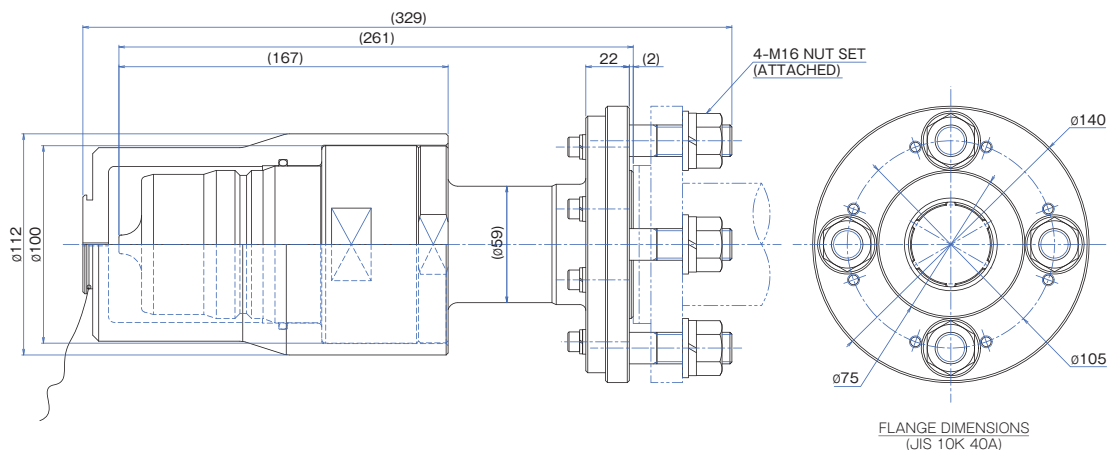
Features

- ⦿ This is all-stainless-steel made for organic chemicals.
- ⦿ Plug for Auto connector (flange type).
- ⦿ Hose and connector can be managed separately. It is excellent for the maintenance.
- ⦿ Connection-error prevention type with key grooves are available.

Specifications

| | |
|--------------------|--------------------------------------|
| Operating pressure | 250kPa |
| Temperature range | 5~50℃ |
| Wetted parts | PCTFE, Various types of O-ring, PTFE |
| Accessories | AQC-50A-PP-P (Dust Proof Cap) |

Dimensions



● Safety Instructions



- Before using the product, read the instruction manual carefully and use it correctly.
We are not liable for accidents that occurred during use other than those described in the instruction manual.
- Use this product within the specified range.
- Confirm the compatibility of the product material with the type of fluid and ambient atmosphere before use.
- Do not detach quick connectors under pressurized conditions.
It may cause chemical fluid to splash out, and injuries or serious accidents.
- Using inappropriate O-ring material may cause leakage. Before specifying O-ring material to be used, make sure that is compatible with fluid type and temperature.
- Do not use fluids that contain refuse or foreign matter, as this may interfere with normal function.
- Abrasive or coagulate fluids may interfere with normal function, and take measures to prevent stacking residue on the wetted parts.
- Do not use auto connectors in applications subject to flexural or tensile stress.
- Make sure that every detachments of quick connectors are done in a clean, dust-free area.
- Do not use the product with excessive vibration or shock.
- When detach quick connectors, always wear a protective face mask, gloves, clothing.
- Fully examine and select the appropriate material for the wetted parts.
- Do not use the product in a harsh environment where fluid temperature changes rapidly, as this may cause damage to the product.
- Product images might be different from the actual product.
- There is a risk of cracking connector material based upon the chemical solution used.
Please be cautious to select the material before use.
- Periodic inspection should be performed for safety when using chemical solution with high permeability for long time.
- If static electricity is generated, the equipment may seriously damage.
Please use after applying antistatic measures.
- When operating 50AQCB forward/backward, please confirm the secondary valve remains open.
- Do not warm up the product directly from the outside.
It may cause external or internal leakage failure.

- Kalrez® is a registered trademark of DuPont.
- Flowell 60 series is a trademark of Flowell Co., Ltd.